



Harmes Turner Brown

Terrace Road, Walton-On-Thames, KT12 2SE



£300,000 Leasehold

Harmes Turner Brown are pleased to present this ground floor two-bedroom apartment, ideally suited for first-time buyers, downsizers or investors alike.

The property offers a spacious open plan kitchen/dining/living area, creating a bright and sociable space perfect for both everyday living and entertaining. The kitchen is well laid out with ample storage and worktop space, flowing seamlessly into the living area.

There are two bedrooms, including a generous principal bedroom benefiting from built-in storage and an en-suite shower room. The second bedroom is ideal as a guest room, home office or additional bedroom, and is served by a modern family bathroom.

Externally, the property is set within a well-maintained development and benefits from allocated parking.

Further benefits include gas central heating, double glazing and a convenient ground floor position.

Call our Walton on Thames branch to view.

INDEPENDENT ESTATE AGENTS

www.htbproperty.com

SALES • LETTINGS • MANAGEMENT

Walton Branch
45A High Street
Walton on Thames
Surrey KT12 1DH
01932 222266

sales@htbproperty.com
lettings@htbproperty.com



Registered address: 2 AC Court, Hight Street, Thames Ditton KT7 0SR Registered in England, Number 6433673

Molesey Branch
45 Walton Road
East Molesey
Surrey KT8 0DP
0208 001 8385

INDEPENDENT ESTATE AGENTS

www.htbproperty.com

SALES • LETTINGS • MANAGEMENT

Walton Branch
45A High Street
Walton on Thames
Surrey KT12 1DH
01932 222266

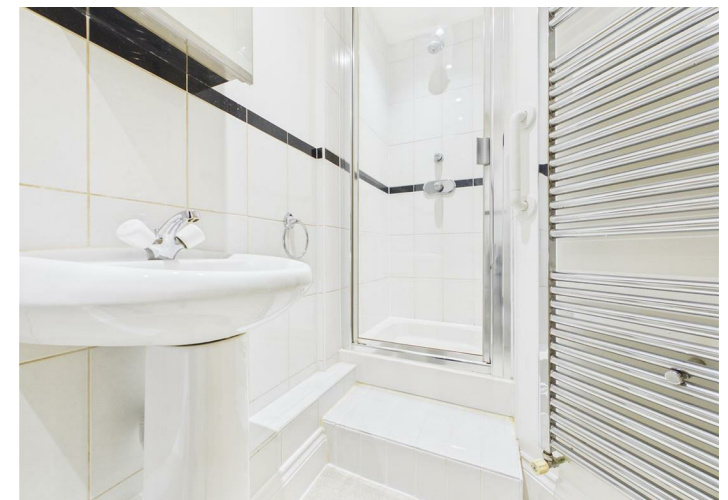
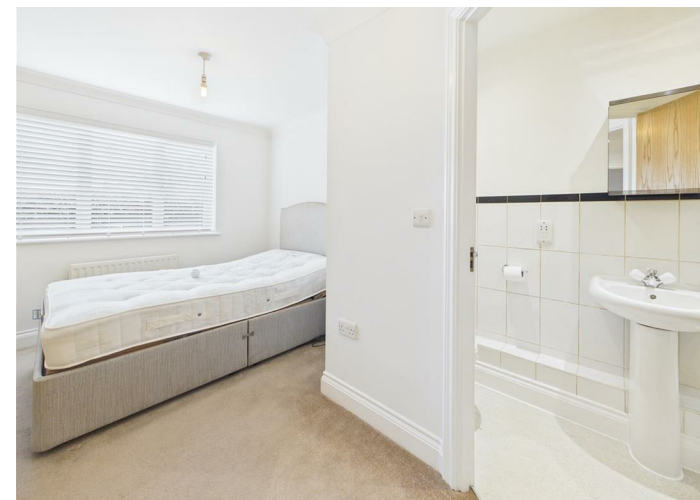
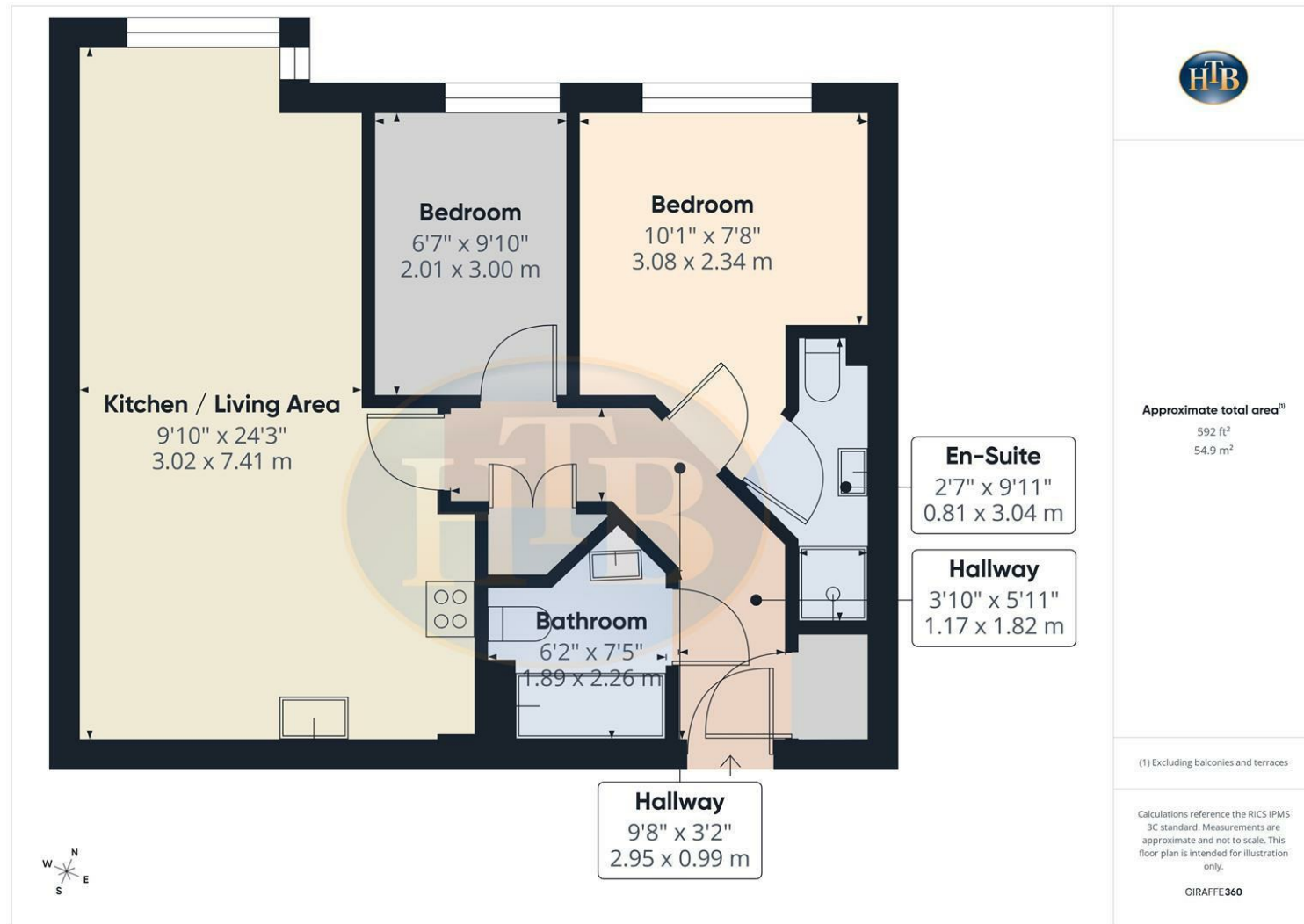
sales@htbproperty.com
lettings@htbproperty.com



Registered address: 2 AC Court, Hight Street, Thames Ditton KT7 0SR Registered in England, Number 6433673

Molesey Branch
45 Walton Road
East Molesey
Surrey KT8 0DP
0208 001 8385

Terrace Road, Walton-On-Thames, KT12 2SE



- NO CHAIN
- SHORT WALK TO TOWN CENTRE
- MASTER BEDROOM WITH EN-SUITE
- BRIGHT AND AIRY LIVING ACCOMMODATION
- COUNCIL TAX BAND D
- TWO DOUBLE BEDROOM GROUND FLOOR APARTMENT
- WELL PRESENTED THROUGHOUT
- EXCELLENT TRANSPORT LINKS NEARBY
- IDEAL FOR FIRST-TIME BUYERS OR INVESTORS
- CLOSE TO THE RIVER THAMES TOW PATH